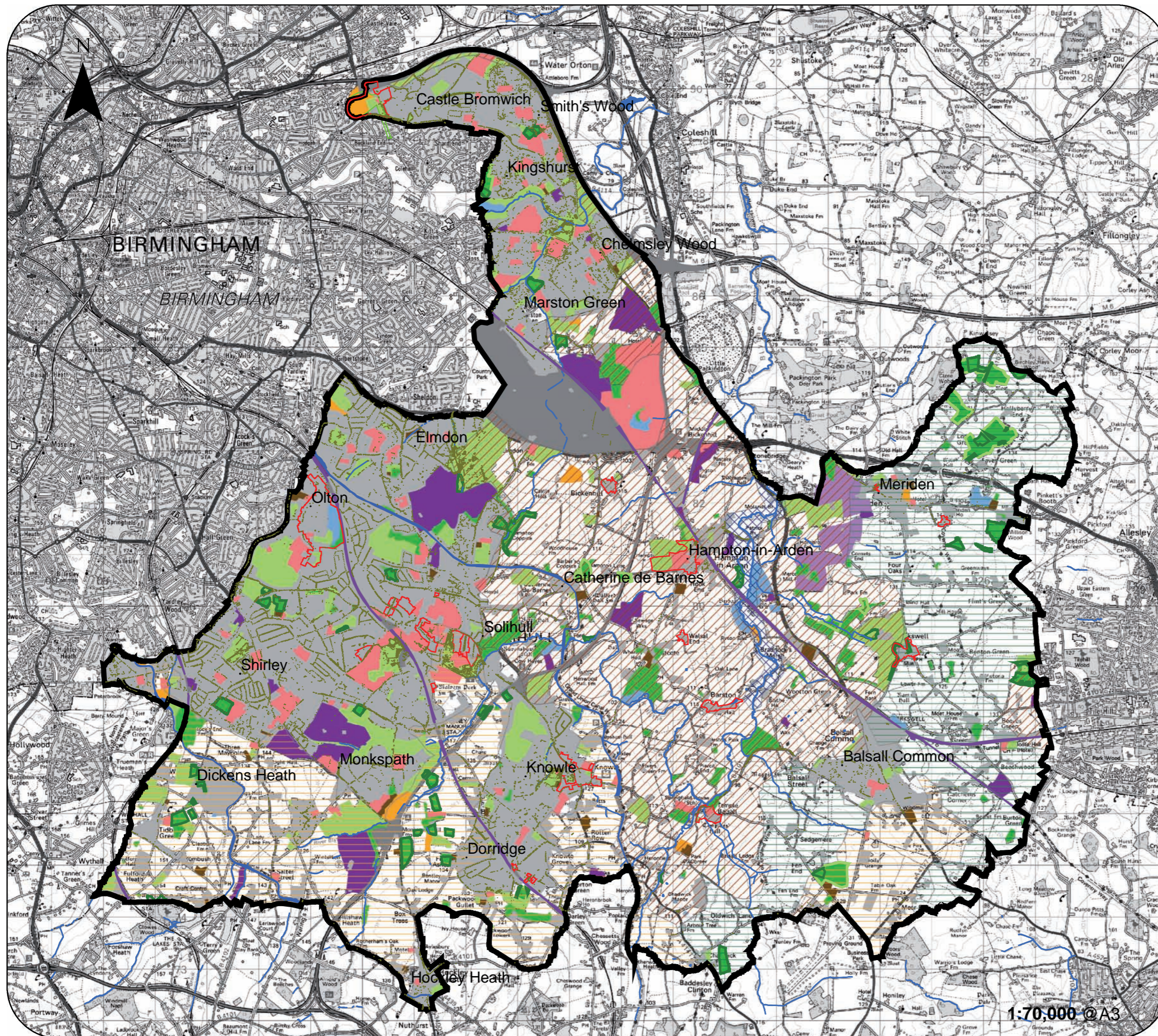


# Solihull MBC Green Infrastructure Study Figure 8: Local Character



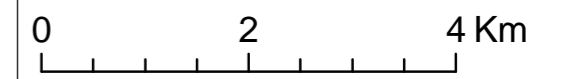
**Key**

**Historic Landscape Character**

- Civic and Commercial
- Designed Landscape
- Extractive
- Industrial
- Allotments
- Settlement
- Transportation
- Unimproved Land
- Water and Valley Floor
- Woodland

**Landscape Character Area**

- Ancient Arden
- Arden Parkland
- Arden Pasture
- Arden River Valleys
- Street Trees
- Canal
- Railway
- Planning Conservation Areas
- Ancient and Semi-natural Woodland
- Ancient Replanted Woodland
- Solihull Boundary
- Historic Parks and Gardens



Source: English Heritage,  
Natural England  
SMBC  
Date: Feb 2011  
Revision:


© Crown copyright. Unauthorised reproduction infringes Crown copyright and may lead to prosecution or civil proceedings. Metropolitan Borough of Solihull - 100023139 [2011]

1:70,000 © A3











# Solihull MBC Green Infrastructure Study


Figure 9.1: Index of  
Multiple Deprivation (IMD)

**Key:**

 Accessible Greenspace (Neighbourhood scale - over 2ha)

**IMD (2007)  
Rank % in England**

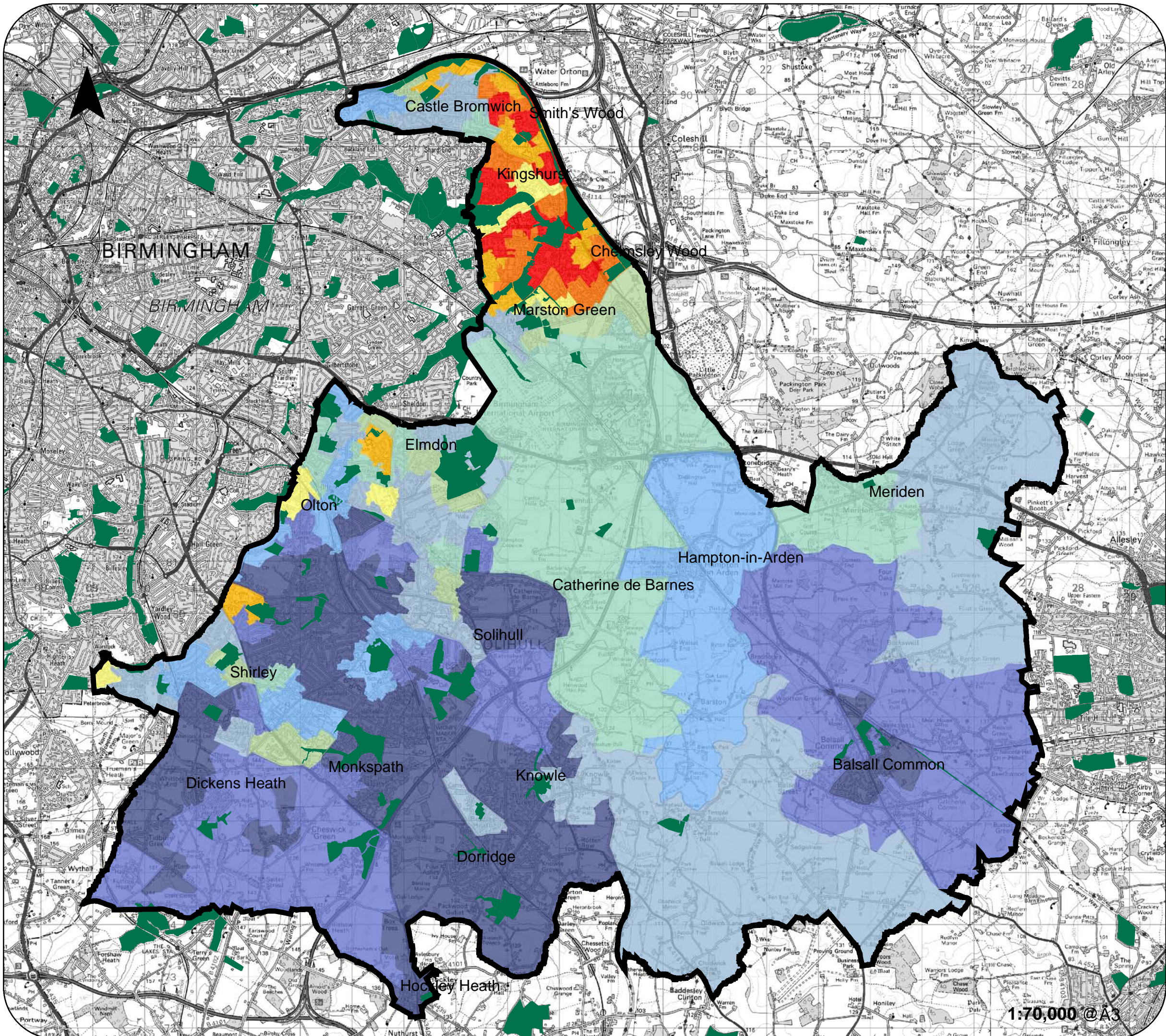
-  0 - 10 (most deprived)
-  10 - 20
-  20 - 30
-  30 - 40
-  40 - 50
-  50 - 60
-  60 - 70
-  70 - 80
-  80 - 90
-  90 - 100 (least deprived)

 Solihull Boundary

0 2 4 Km

Source: BCC  
SMBC  
Date: Feb 2011  
Revision:

© Crown copyright. Unauthorised reproduction infringes Crown copyright and may lead to prosecution or civil proceedings. Metropolitan Borough of Solihull - 100023139 [2011]

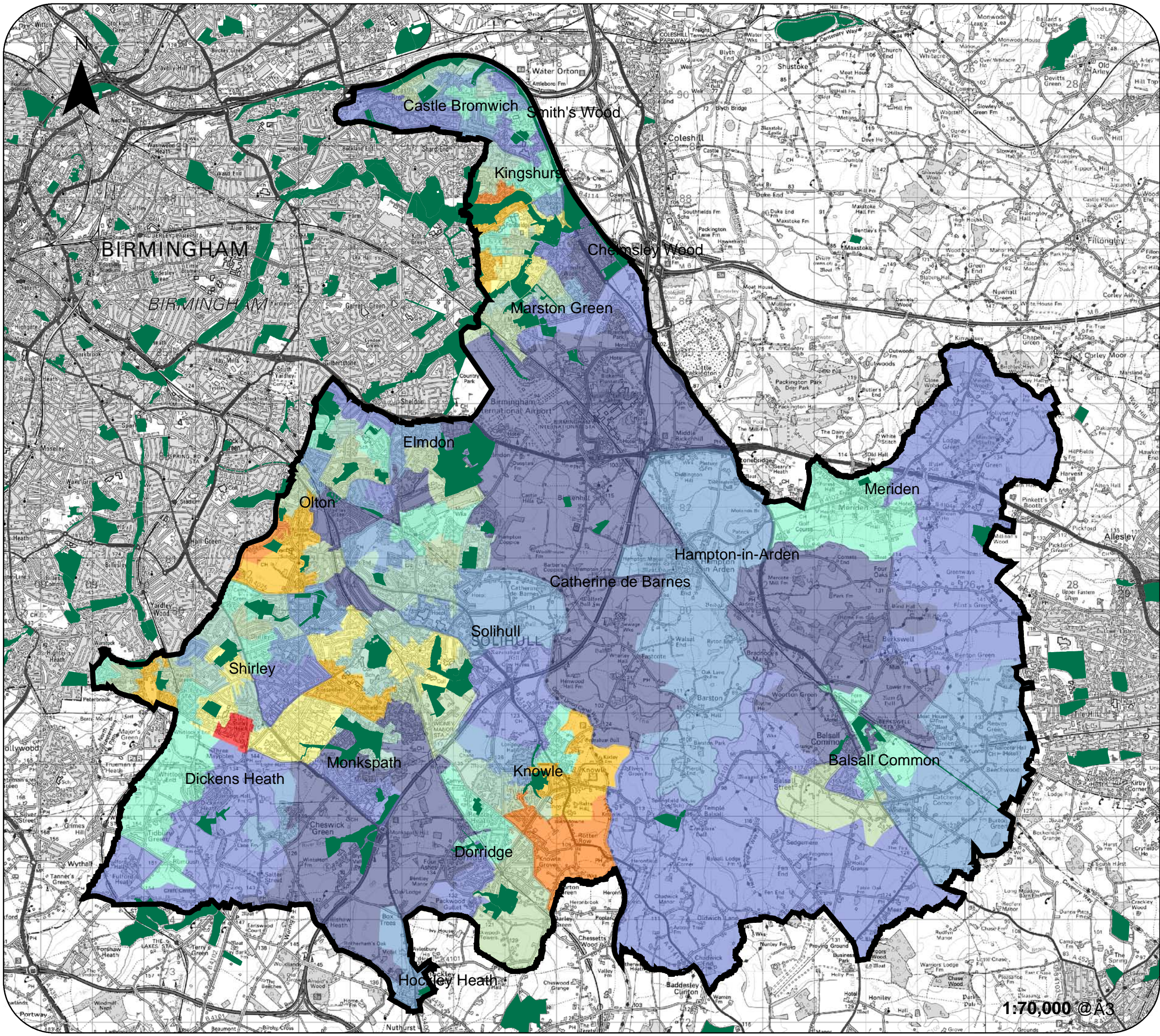


1:70,000 @ A3



# Solihull MBC Green Infrastructure Study

**Figure 9.3: Child Well-being Index (Environment)**



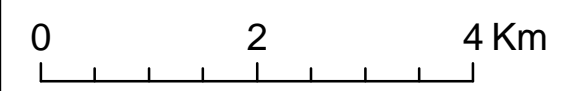
**Key:**

- Accessible Greenspace (Neighbourhood scale - over 2ha)

**Child Well-being Index (2009) - Environment Rank % in England**

- 0 - 10 (lowest well-being)
- 10 - 20
- 20 - 30
- 30 - 40
- 40 - 50
- 50 - 60
- 60 - 70
- 70 - 80
- 80 - 90
- 90 - 100 (highest well-being)

Solihull Boundary



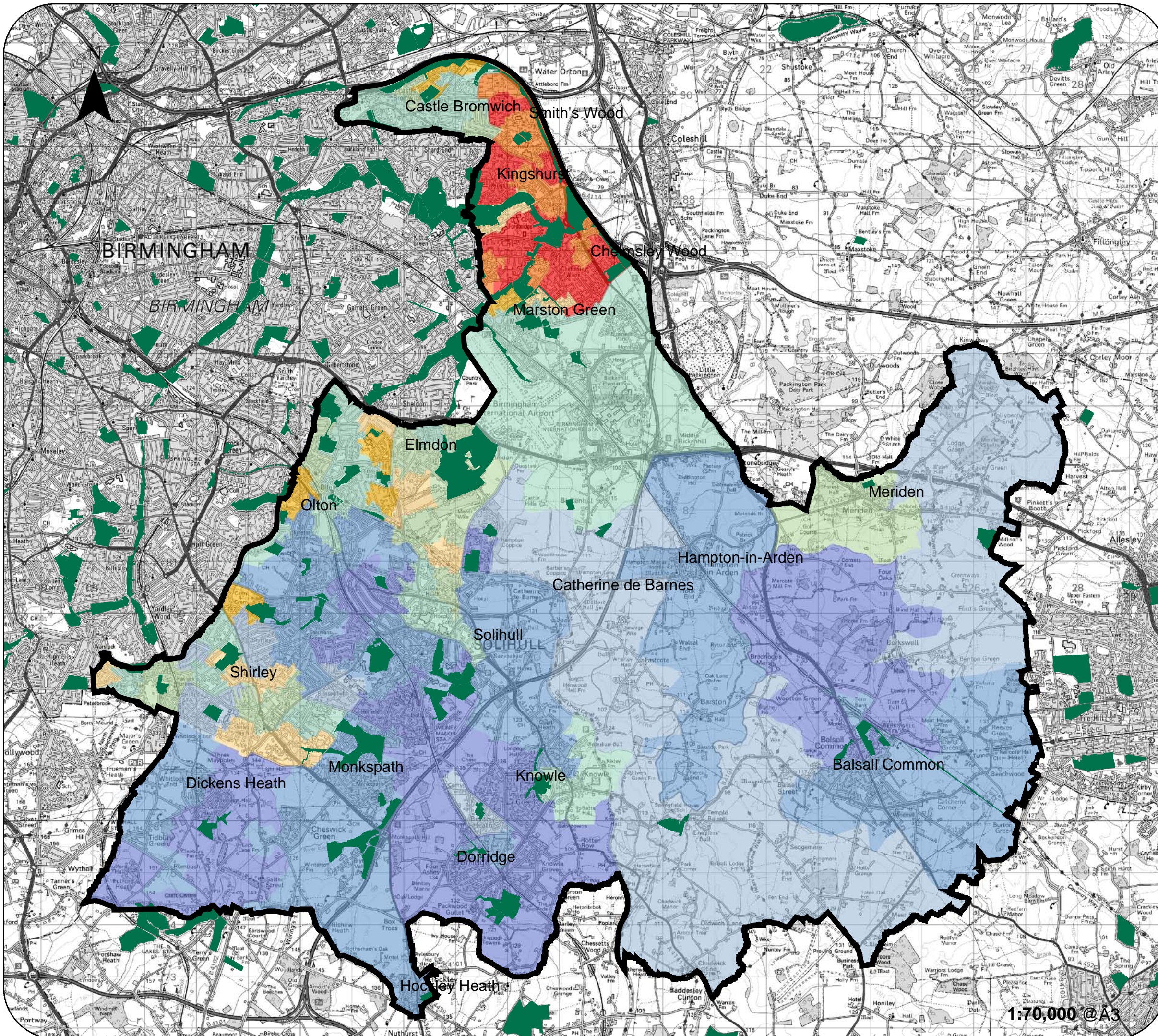
Source: BCC  
SMBC  
Date: Feb 2011  
Revision:

© Crown copyright. Unauthorised reproduction infringes Crown copyright and may lead to prosecution or civil proceedings. Metropolitan Borough of Solihull - 100023139 [2011]

1:70,000 @ A3

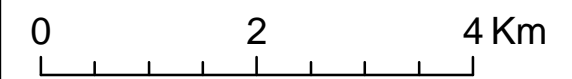
# Solihull MBC Green Infrastructure Study

Figure 9.4: Vitality Index



**Key:**

- Accessible Greenspace (Neighbourhood scale - over 2ha)
- Vitality Index**
- 0.10001 - 0.20000 (highest vitality)
- 0.20001 - 0.30000
- 0.30001 - 0.40000
- 0.40001 - 0.50000
- 0.50001 - 0.60000
- 0.60001 - 0.70000
- 0.70001 - 0.80000
- 0.80001 - 0.90000
- 0.90001 - 1.00000 (lowest vitality)
- Solihull Boundary



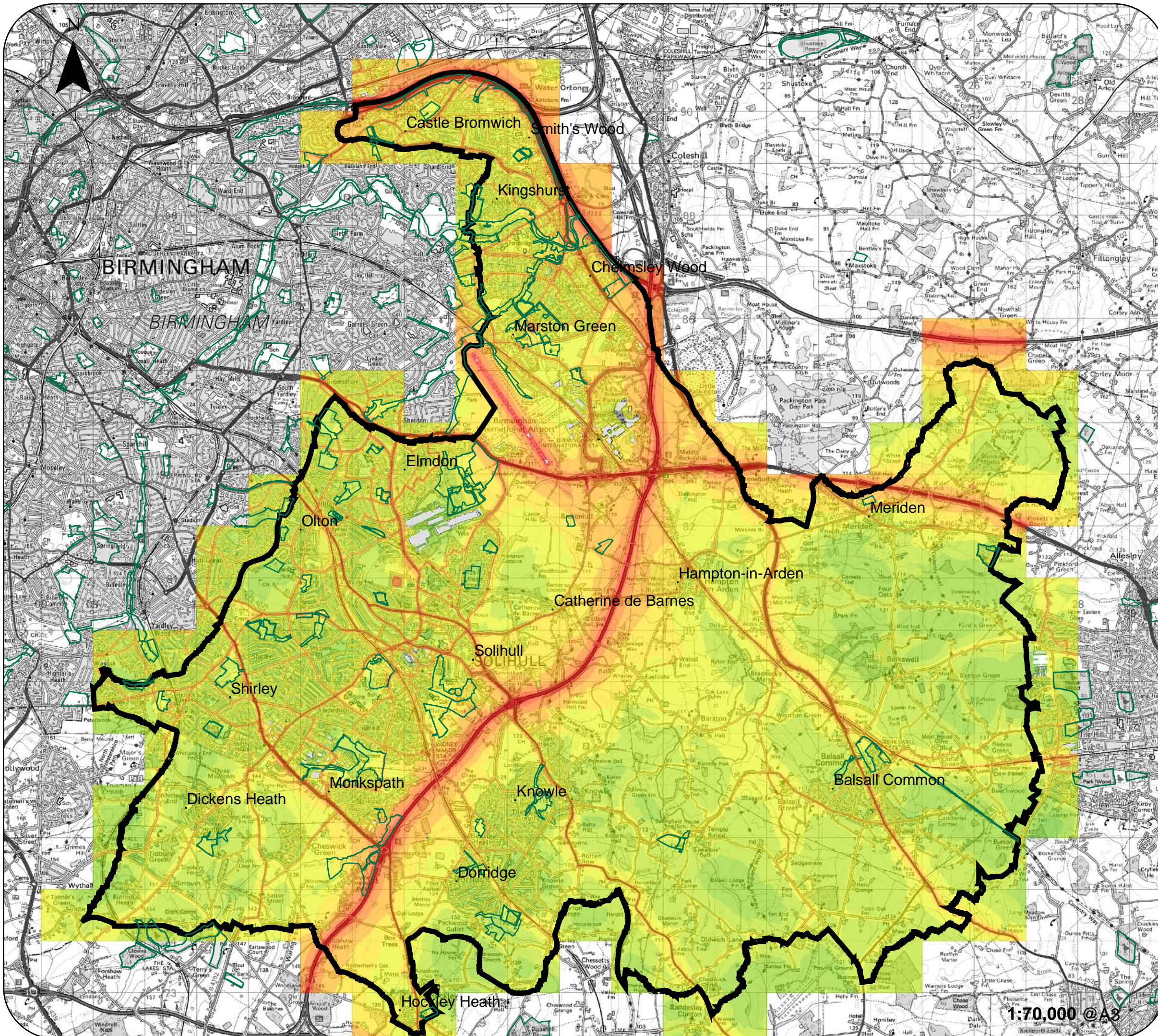
Source: BCC  
SMBC  
Date: Feb 2011  
Revision:

© Crown copyright. Unauthorised reproduction infringes Crown copyright and may lead to prosecution or civil proceedings. Metropolitan Borough of Solihull - 100023139 [2011]

1:70,000 @ A3

# Solihull MBC Green Infrastructure Study

**Figure 9.5: Noise  
Pollution (rail, road and  
air during the day)**



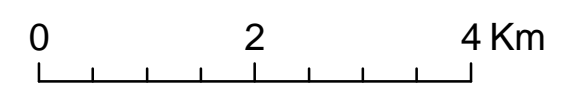
**Key:**

Noise pollution (road, rail and air) during the day

- 35-39dB
- 40-44dB
- 45-49dB
- 50-54dB
- 55-59dB
- 60-64dB
- 65-69dB
- 70-74dB
- 75-79dB
- >80dB

Accessible Greenspace (Neighbourhood scale - over 2ha)

Solihull Boundary



Source: SMBC  
Date: Feb 2011  
Revision:

© Crown copyright. Unauthorised reproduction infringes Crown copyright and may lead to prosecution or civil proceedings. Metropolitan Borough of Solihull - 100023139 [2011]

1:70,000 @A3

# Solihull MBC Green Infrastructure Study

Figure 10: Existing  
Green Infrastructure

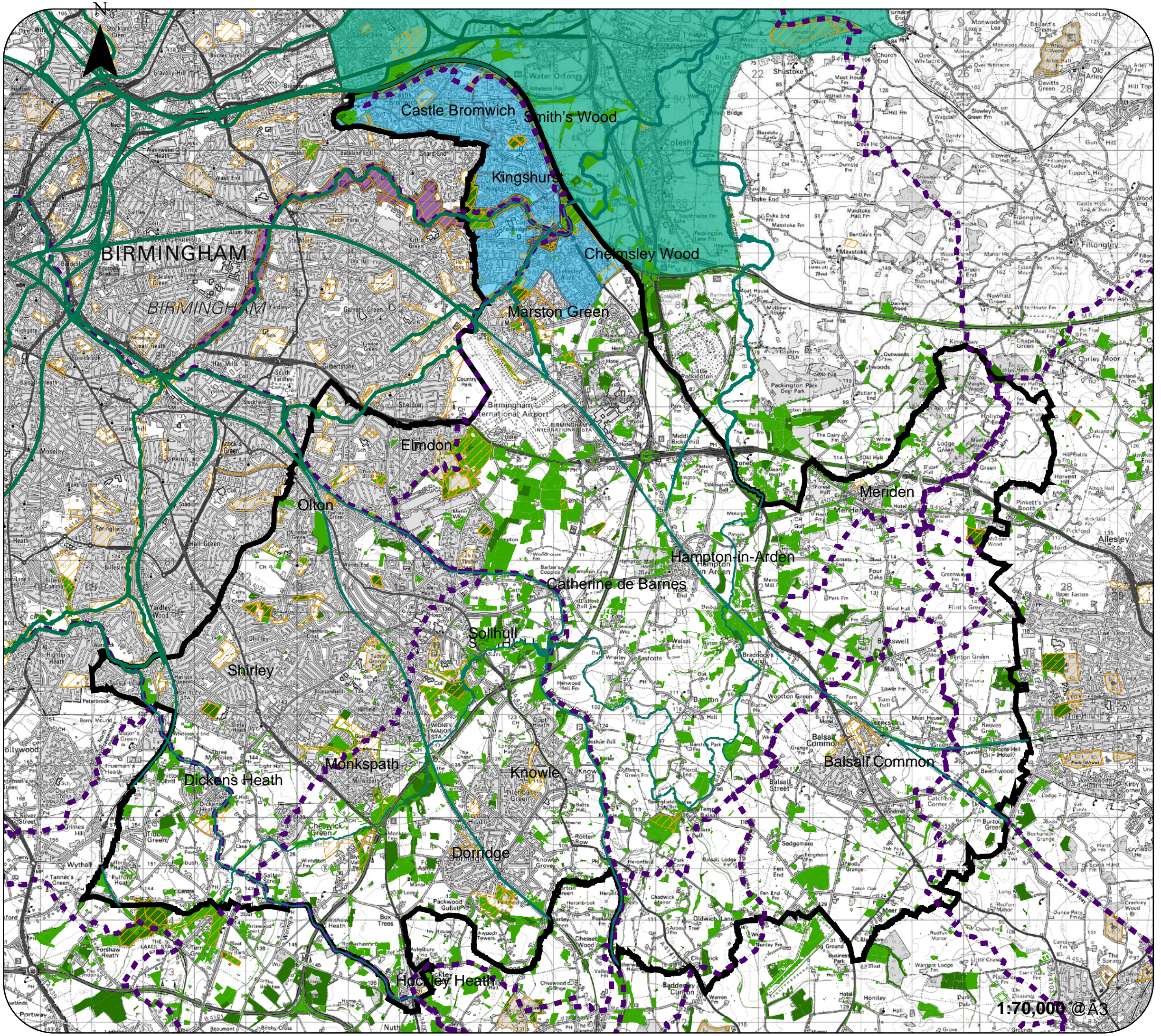
**Key:**

- High Biodiversity Value Habitat
- Medium Biodiversity Value Habitat
- Kingfisher Country Park
- Tame Valley LfL Project
- North Solihull Regen Project
- Solihull Boundary
- Accessible Greenspace (Neighbourhood scale - over 2ha)
- Green Corridor/Links
- Long Distance Paths

0 2 4 Km

Source: HBA 2011 Phase 1 data  
Ecorecord 2010  
English Heritage  
BCC  
SMBC  
Date: Jan 2012  
Revision:

© Crown copyright. Unauthorised reproduction infringes Crown copyright and may lead to prosecution or civil proceedings. Metropolitan Borough of Solihull - 100023139 [2012]

























1:70,000 @ A3

# Solihull MBC Green Infrastructure Study

## Figure 11: Opportunities and Constraints

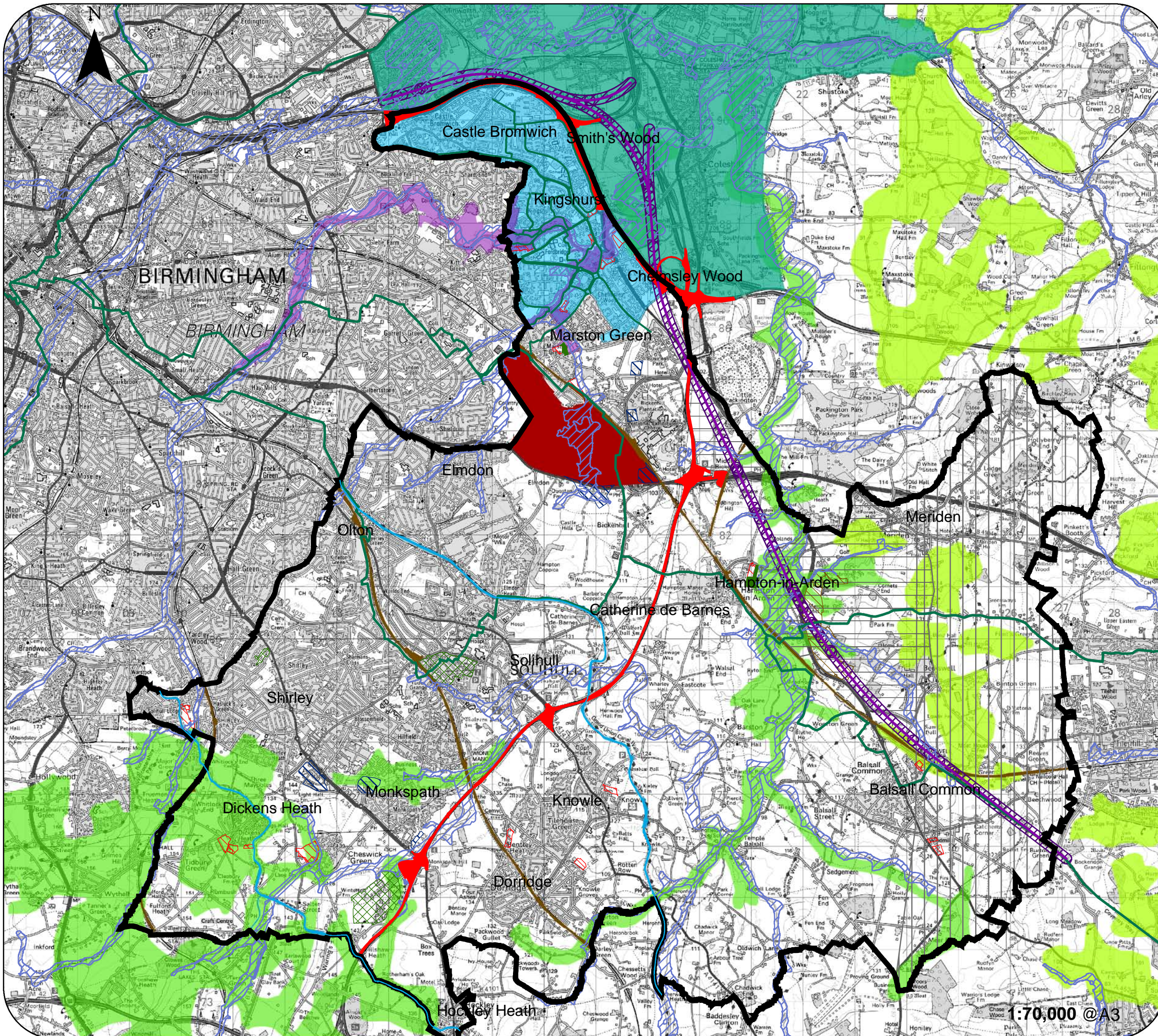
**Key**

-  Solihull boundary
- Existing Projects**
-  Kingfisher Country Park
-  North Solihull Regen
-  Tame Valley LfL Project
- Opportunities**
-  Local Plan green space sites (Jan 2012)
-  ALC Grade 4: Poor quality set aside for food production
-  ALC Grade 2: Good quality (set aside for food production)
-  Railway
-  Canal
-  Proposed Cycleways
- Constraints**
-  Birmingham Airport (BHX)
-  Motorway
- Potentially either/both an opportunity and constraints**
-  Local Plan housing site (Jan 2012)
-  Local Plan employment sites (Jan 2012)
-  Local Plan mixed use sites (Jan 2012)
-  Local Plan minerals sites (Jan 2012)
-  Local Plan mineral safeguarding area (Jan 2012)
-  Local Plan mineral safeguarding area for coal (Jan 2012)
-  Floodzone: 1:1000 yr
-  HS2 Preferred Route (March 2010)
-  200m direct and indirect impact zone
-  High Speed 2 Rail Link (Preferred Route - March 2010)

0 2 4 Km

Source: SMBC  
Date: Jan 2012  
Revision:

© Crown copyright. Unauthorised reproduction infringes Crown copyright and may lead to prosecution or civil proceedings. Metropolitan Borough of Solihull - 100023139 [2012]

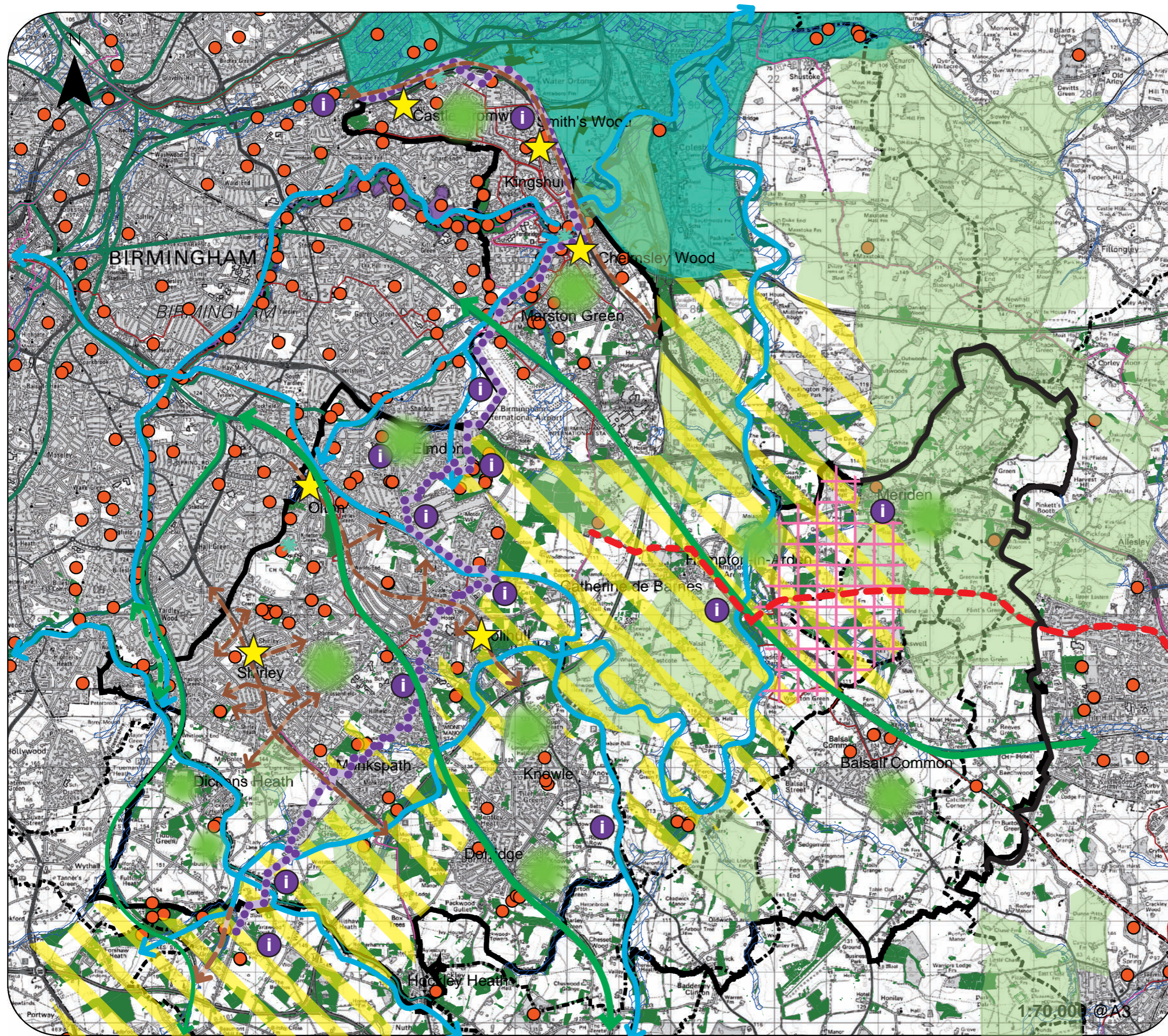


1:70,000 @A3



# Solihull MBC Green Infrastructure Study

## Figure 12: Green Infrastructure Vision



### Existing / Enhance

- Kingfisher Country Park
- Tame Valley LfL Project
- High/med biodiversity value habitats
- Accessible greenspace (over 2ha)
- Floodzone (1:1000 year)
- Blue link along waterway
- Green link
- Long distance paths
- Cycle routes

### Create

- Arden landscape enhancement
- Accessible greenspace (over 2ha)
- Mineral enhancement/restoration
- Biodiversity enhancement/restoration
- Green links
- Heritage trail (based on The Solihull Way long-distance path)
- Interpretation opportunities - historic & cultural
- Local character enhancement area
- Major road tree planting schemes
- Sustrans Cycle route
- Cycle routes
- Local Nature Reserves

0 2 4 Km

Source: HBA 2011 Phase 1 data  
Ecorecord 2010  
English Heritage  
BCC  
SMBC  
Date: Jan 2012  
Revision:

© Crown copyright. Unauthorised reproduction infringes Crown copyright and may lead to prosecution or civil proceedings. Metropolitan Borough of Solihull - 100023139 [2012]